



SPC PARKE / SPC FLOORING

PORFLOOR

SPC FLOORING COLLECTION



Coming Soon: **14F HerringB ONE**

Our new HerringB One system makes herringbone SPC flooring easy and fast to install – no more A & B planks, just one type of plank for perfect results.



SPC FLOORING TECHNICAL DETAILS

Long Product Life: SPC is durable than most other flooring options. Mineral content makes SPC resistant to wear and tear.

Waterproof: PorFloor SPC has a rigid core and it is 100% waterproof, so it performs well in moisture-prone areas.

Low Noise: PorFloor SPC has rigid core which provides better stability, while an attached underlayment enhances comfort and sound absorption.

100% Recyclable: PorFloor SPC products are fully recyclable, aligning with eco-conscious practices and reducing environmental impact.

Fire Resistant: SPC flooring is resistant to fire, providing an added layer of safety.

Non-Toxic: PorFloor SPC is free from harmful chemicals like formaldehyde, ensuring better indoor air quality.

Low Maintenance: PorFloor SPC is easy to clean due to stain-resistant and waterproof features.

Aesthetic Versatility: PorFloor SPC offers wood, stone, and abstract designs.

Impact Resistance: PorFloor SPC is highly resistant to impacts, scratches, and wear, making it ideal for high-traffic areas.

DIY Friendly: PorFloor SPC features a user-friendly click-locking mechanism that allows for fast and easy installation without the need for glue or nails. PorFloor SPC can be cut to size with a simple utility knife. Simply score the surface and then snap it along the scored line.

Stone Inspired New SPC Collection

URBAN GREY
PS 125-9



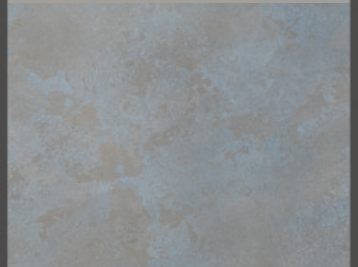
GRAVEL CEMENT
PS 126-5



MARQUINA GREY
PS 133-6



RUSTY CONCRETE
PS 3118-C



CALACATTA
PS 7031-1



EMPREDOR
PS 112-12



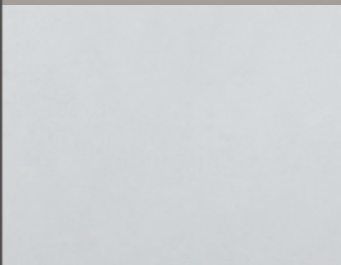
URBAN CREAM
PS 7151-6



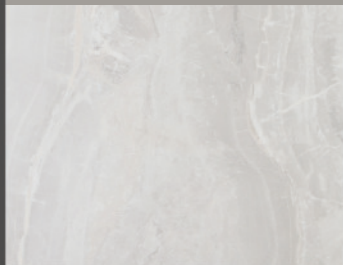
RAW CONCRETE
PS 109-1



CLOUDY WHITE
PS 127-6



WHITE ONYX
PS 23092K-2



MARQUINA BLACK
PS 23073-1



CARRARA
PS 23108K-1





Taksim
PRF 1035-81



PLANK
180 x 1220 mm
0,30mm / 0,55mm
4-5-6 mm



TILE
305 x 610 mm
0,30mm / 0,55mm
4-5-6 mm



HERRINGBONE
120 x 720 mm
0,30mm / 0,55mm
5 mm



PLANK XL
228 x 1220 mm
0,30mm / 0,55mm
4-5-6 mm

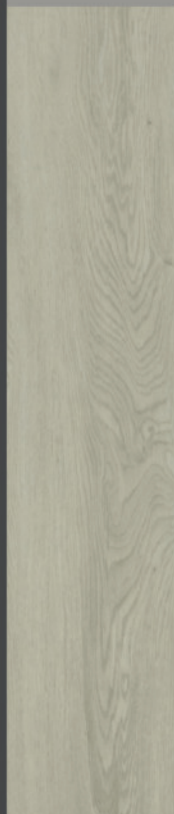
Giza-14
PRF 10381-14



Giza-15
PRF 10381-15



Giza-21
PRF 10381-21



Liberty-3
PRF 1011-3



Liberty-7
PRF 1238-7

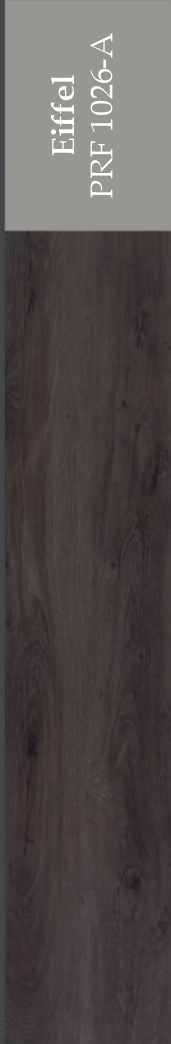


Liberty-5
PRF 1283-5



Liberty-9
PRF 1322-9





1220mm

180 - 228mm

MARQUINA PW 8264



INVISIBLE PW 8209-1



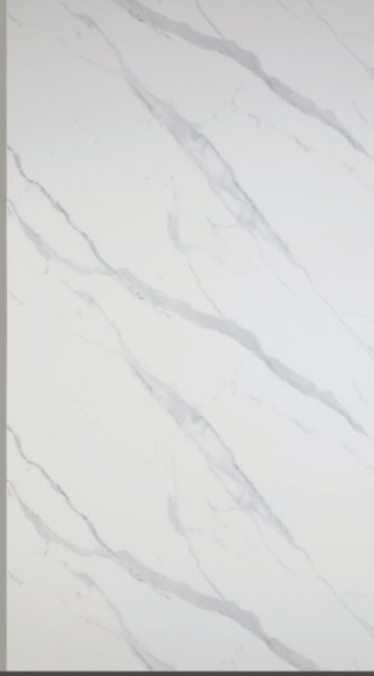
LENA GREY PW 81480



STATUARIO PW 8272



CALACATTA PW 8230



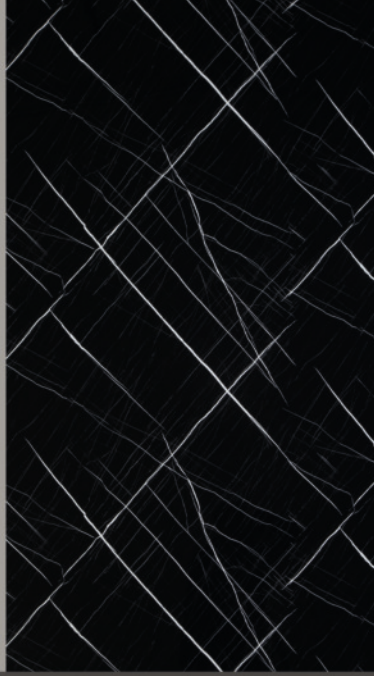
BOLZANO PW 8088



GRIZIO PW 8259



SAHARA PW 8231-2



IRIS PW 8167-1



MYSTIC GOLD PW 81930JX



ROYAL GOLD PW 81932JX



JENA PW 8266



CARRARA GOLD PW 1907-1G (Glided)
CARRARA GOLD PW 81493



PANDA GOLD PW 81929JX



ARABESCATO PW 8267-1



BLACK GOLD PW 1910-1G



SMOKY GOLD PW 81928JX



IMPERIAL GOLD PW 9904





Technical Specifications

- Made from rigid SPC (Stone Polymer Composite) for durability and strength.
- 100% waterproof.
- Fire-resistant material enhances safety in residential and commercial spaces
- High-gloss mirror finish with Curtain lacquer UV coating for a sleek, reflective surface.
- Large panel sizes of 122x244 cm and 122x280 cm to provide fewer seams.
- Durable 2.7 mm thickness makes handling and installation easy.
- Scratch and impact-resistant surface protects against daily wear and tear.
- Antibacterial properties ensure a cleaner and healthier indoor environment.
- Lead-free & Formaldehyde-free composition, making it a safe and eco-friendly choice for interiors.
- DIY-friendly installation, requiring no professional help.
- Low maintenance with an easy-to-clean surface that resists stains and discoloration.
- Can be applied directly over existing surfaces for quick renovations.
- 100% Recyclable materials, supporting a more sustainable future.
- Produced with solar energy, reducing environmental impact.
- Suitable for both residential and commercial applications.



At Porfloor, we specialize in high-quality SPC flooring & wall panels with a focus on durability, design, and sustainability. Our products combine advanced technology with timeless style. Proudly produced in our 25.000 SQM Factory area in Sakarya/Türkiye, we bring practical, beautiful flooring solutions to homes and businesses around the world.

1994



Portakal Ahşap: Founded to produce and supply office furnitures.

2003



Portakal Plastik: Started PVC and ABS edgeband production.

2006



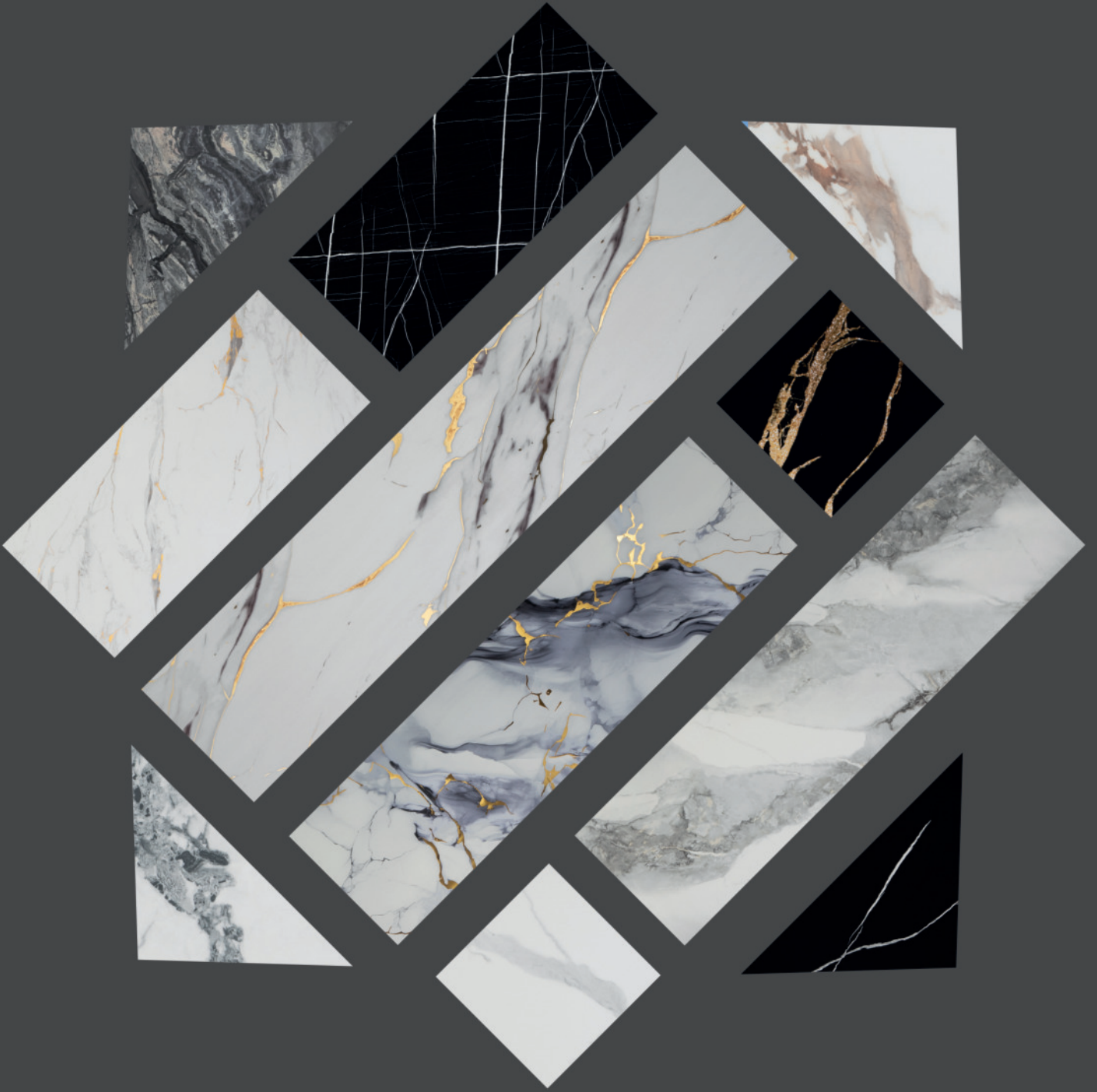
Porvil: Investment to produce roofing tiles from PVC and transparent roofing sheets from PVC and PC.

2022



Porfloor: Production of SPC floorings and Wall panels to inspire future of living spaces.





DUVAR PANELİ / WALL PANEL

PORWALL



Fabrika Adres: Sakarya Organize Sanayi Bölgesi KAMOSB Merkez Mahallesi 2 Nolu Yol No:17 Kaynarca / SAKARYA



0(264) 502 00 75



www.porfloor.com



info@porfloor.com



Wp +90 546 522 70 65